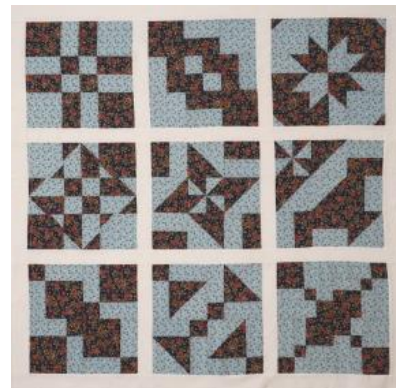
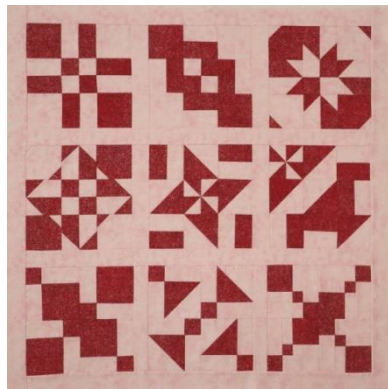
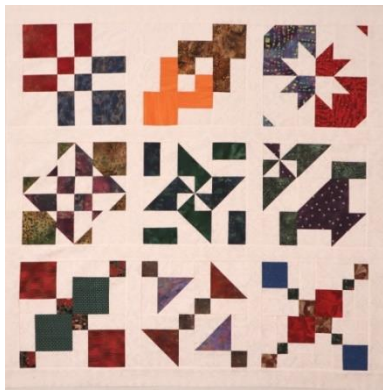


Making Magic, A Disappearing Block Sampler Quilt (39" X 39")



In this 6-hour online workshop you will create 9 different disappearing blocks to make this beautiful sampler.

You will need:

2/3 yards of 42" wide light fabric for the background (these are to be cut as described below before the workshop).

2/3 yards of 42" wide medium to dark fabric or scraps to make the blocks described below.

1 yard of 42" wide light fabric (either the same as the background or a complimentary color) for the sashing and binding.

Your fabrics should all be small prints that read as solid. These blocks won't look good with high contrast prints.

In order to make all these blocks in the time allotted, the squares and half square triangle blocks need to be prepared ahead of time.

Background fabric (light):

- (4) 6 ¼" X 6 ¼" squares
- (12) 4 ¼" X 4 ¼" squares
- (4) 3 ¼" X 3 ¼" squares
- (8) 6 ¾" X 6 ¾" squares (for Half Square Triangle Blocks)
- (2) 4 ¾" X 4 ¾" squares (for Half Square Triangle Blocks)

Primary Fabric (medium to dark):

- (4) 6 ¼" X 6 ¼" squares
- (7) 4 ¼" X 4 ¼" squares
- (5) 3 ¼" X 3 ¼" squares
- (8) 6 ¾" X 6 ¾" squares (for Half Square Triangle Blocks)
- (2) 4 ¾" X 4 ¾" squares (for Half Square Triangle Blocks)

Make the Half Square Triangle Blocks:

Use the (8) 6 ¾" X 6 ¾" squares of light fabric and (8) 6 ¾" X 6 ¾" of dark fabric and make (16) Half square triangle blocks. Trim to 6 ¼" X 6 ¼".

Use the (2) 4 ¾" X 4 ¾" squares of light fabric and (2) 4 ¾" X 4 ¾" of dark fabric and make (4) Half square triangles blocks. Trim to 4 ¼" X 4 ¼".



To make the Half Square Triangle Blocks (HST Blocks). Either cut the squares into triangles along the diagonal and sew one light triangle to one dark triangle. Or place a light square on top of a dark square right sides together, draw a line down the diagonal of the light square and sew a scan ¼" seam on either side of the line. Cut along the drawn line. This will create 2 HST Blocks at once. Press the HST Blocks open and trim to either 6 ¼" X 6 ¼" or 4 ¼" X 4 ¼" depending on the size square you used.

Sashing (to go in between the blocks):

- (8) strips 2 ¼" width of fabric

Because you are making this in your own home, you should have all the normal other supplies like matching or neutral thread, scissors, rotary cutter, mat, rulers, seam ripper, pins, iron, etc. already on hand.